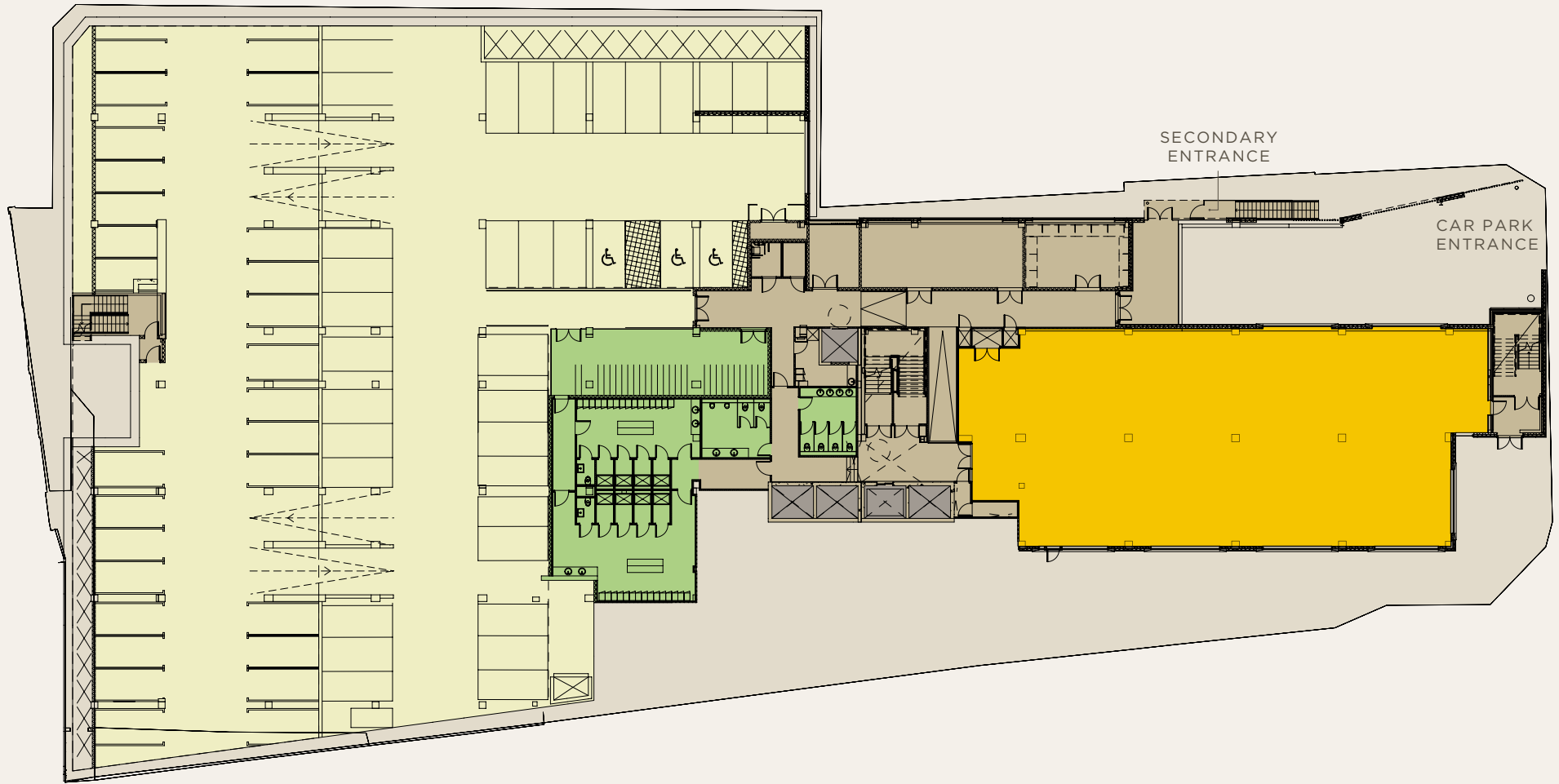


STREET LEVEL

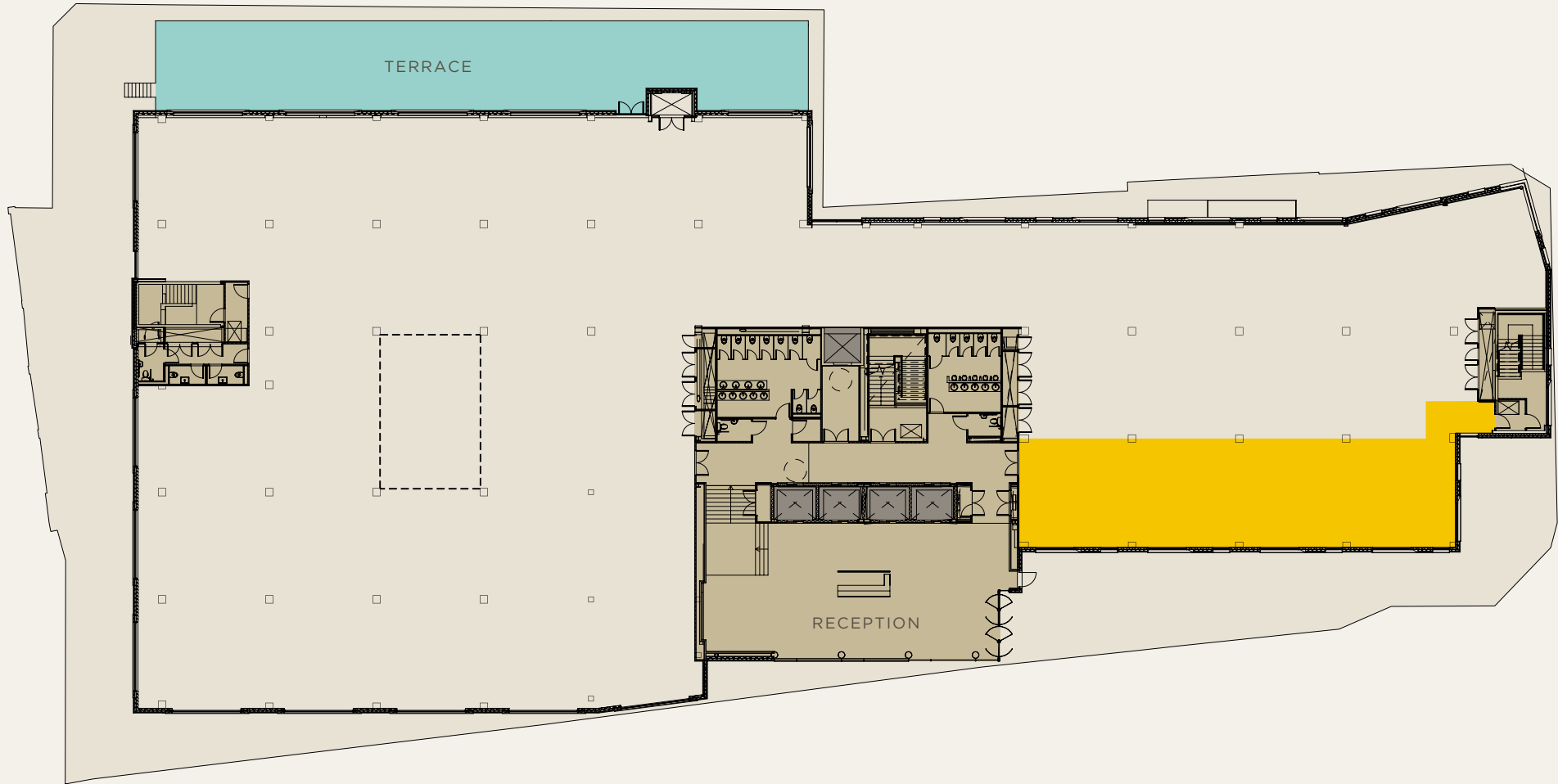
5,245 sq ft (487 sq m) IPMS 3



- OFFICE SPACE AVAILABLE
- PARKING
- CYCLE FACILITIES
- TERRACE
- CORE
- LIFTS

# GROUND FLOOR

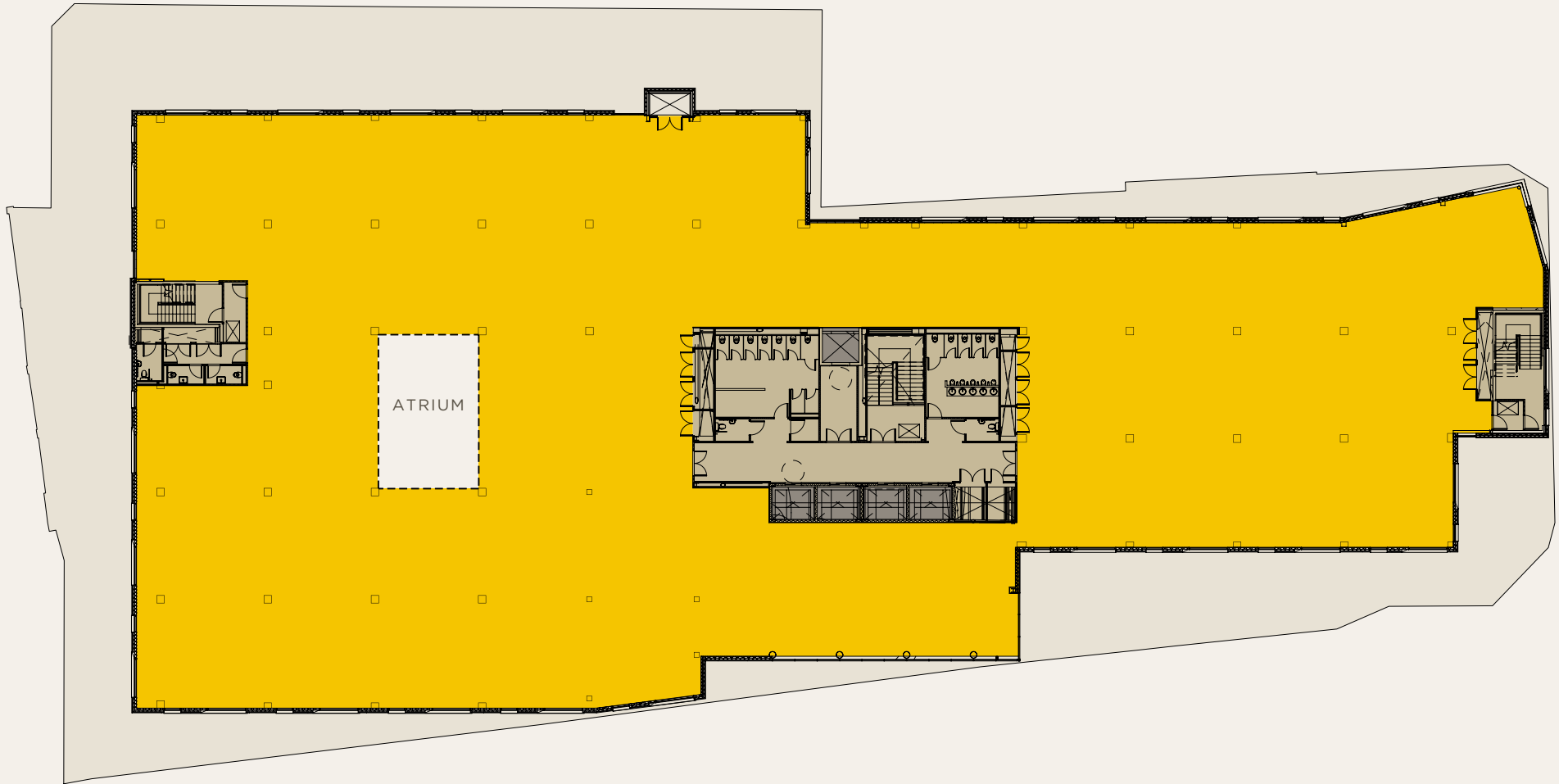
23,000 sq ft of the ground floor let. 2,355 sq ft (221 sq m) remains



- OFFICE SPACE AVAILABLE
- TERRACE
- CORE
- LIFTS

FIRST FLOOR

26,982 sq ft (2,506 sq m) IPMS 3

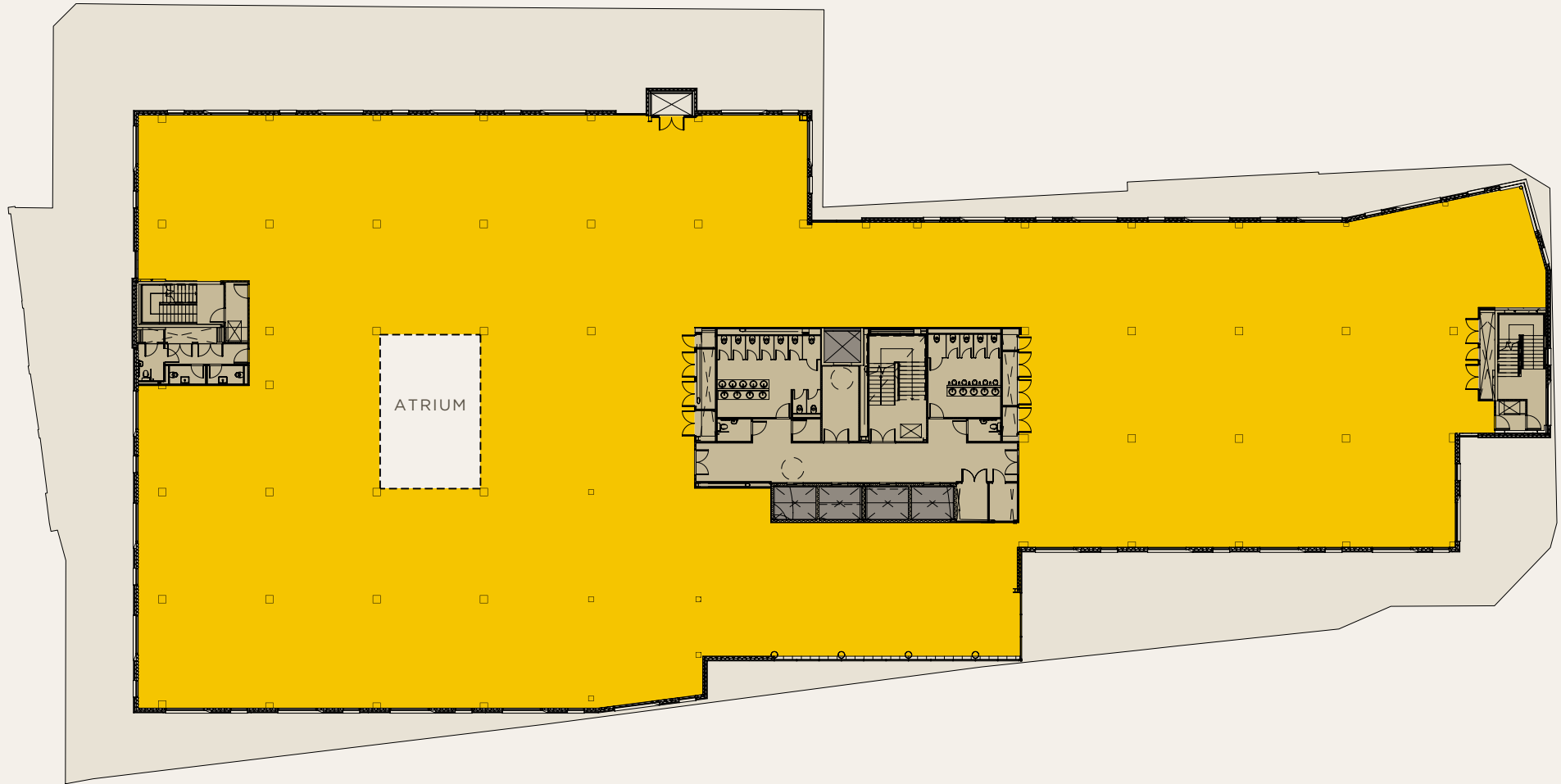


- OFFICE SPACE AVAILABLE
- CORE
- LIFTS

FLOOR PLANS NOT TO SCALE - FOR INDICATIVE PURPOSES ONLY

SECOND FLOOR

26,980 sq ft (2,506 sq m) IPMS 3

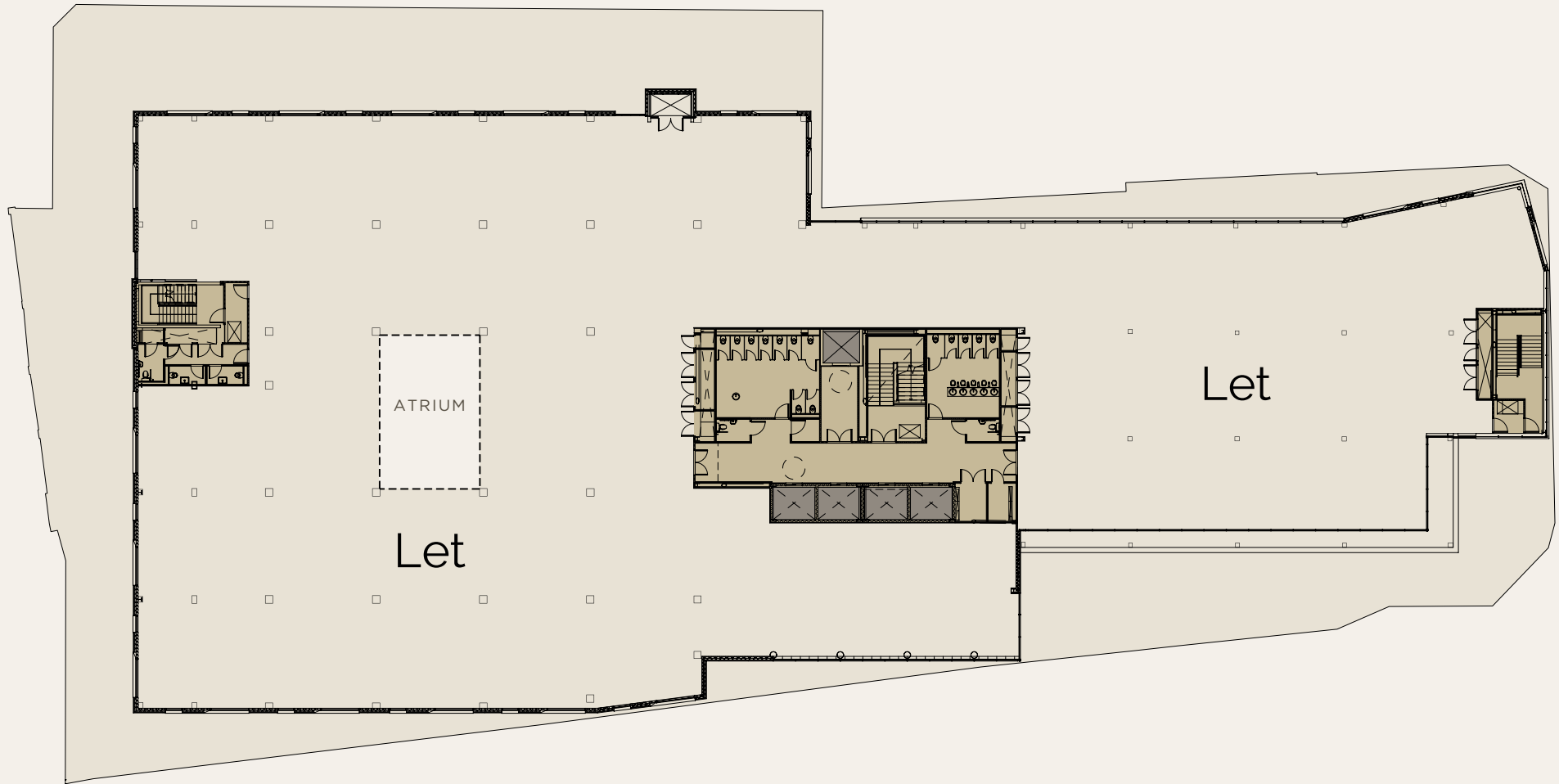


- OFFICE SPACE AVAILABLE
- CORE
- LIFTS

FLOOR PLANS NOT TO SCALE - FOR INDICATIVE PURPOSES ONLY

THIRD FLOOR

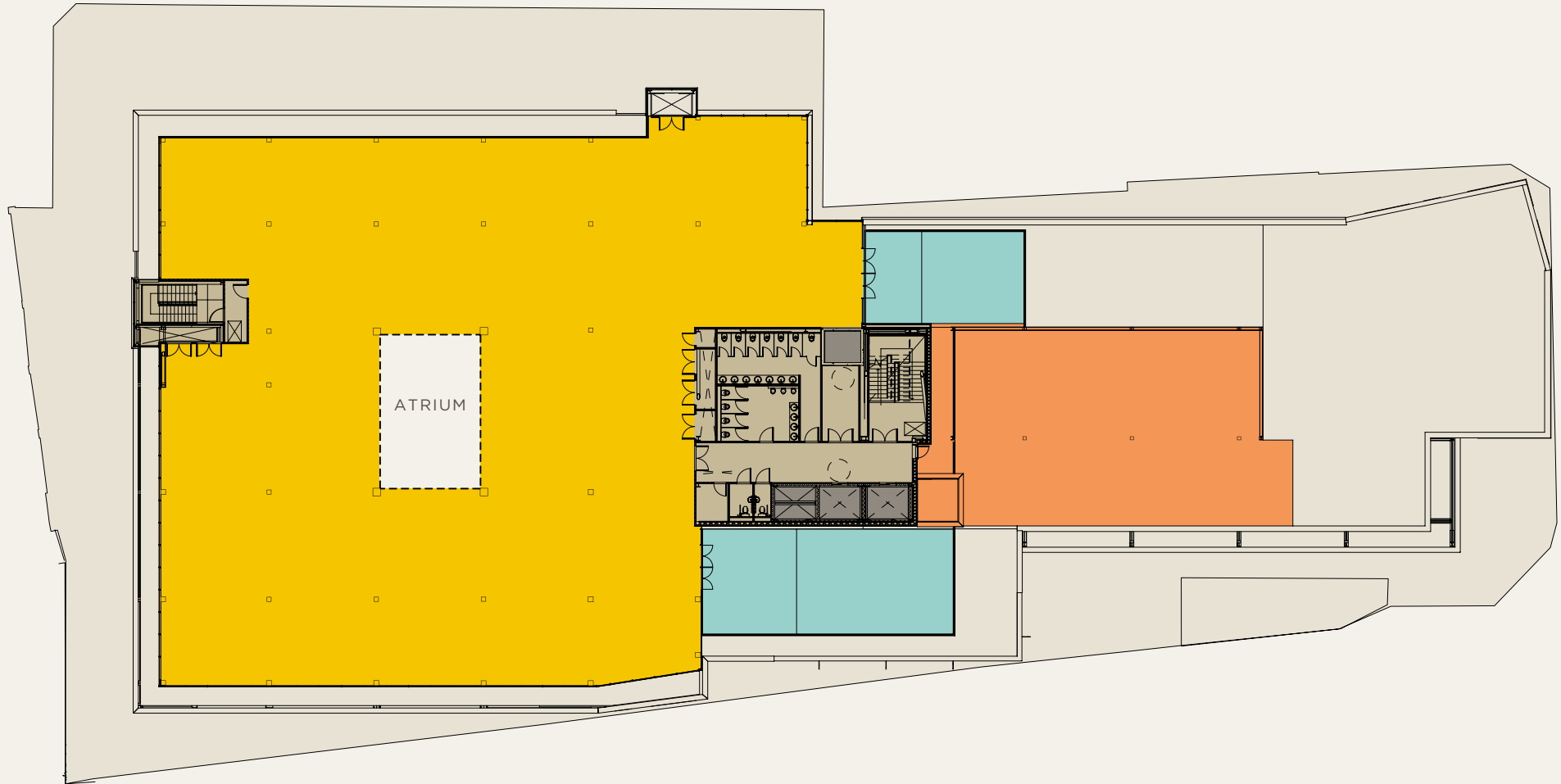
26,541 sq ft (2,465 sq m) IPMS 3



- OFFICE SPACE AVAILABLE
- CORE
- LIFTS

FOURTH FLOOR

16,584 sq ft (1,540 sq m) IPMS 3



- OFFICE SPACE AVAILABLE
- TERRACE
- CORE
- PLANT
- LIFTS

FLOOR PLANS NOT TO SCALE - FOR INDICATIVE PURPOSES ONLY